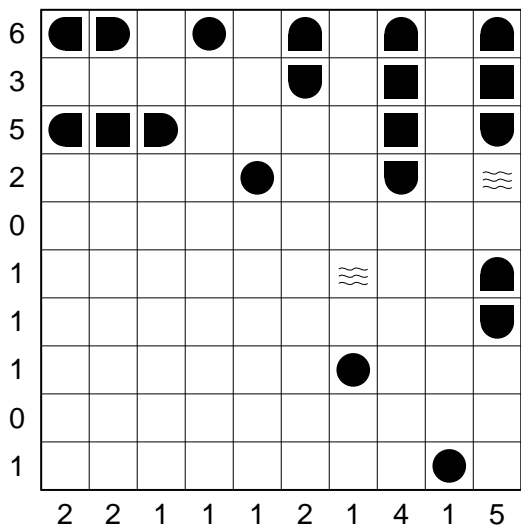
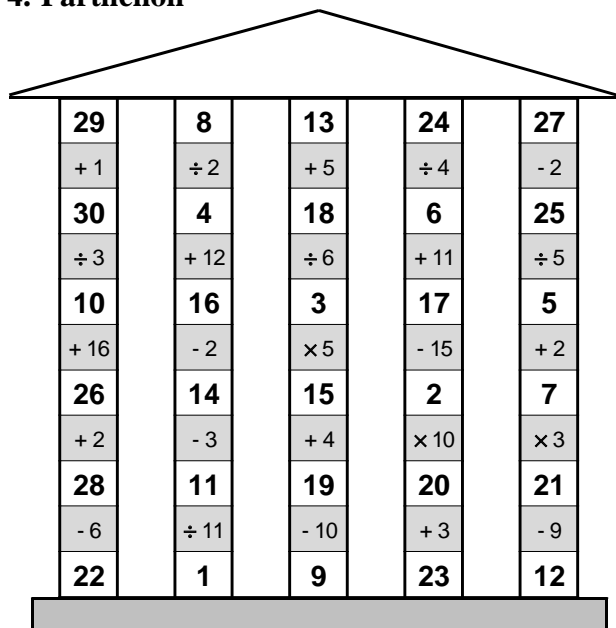


# Part I - Solutions

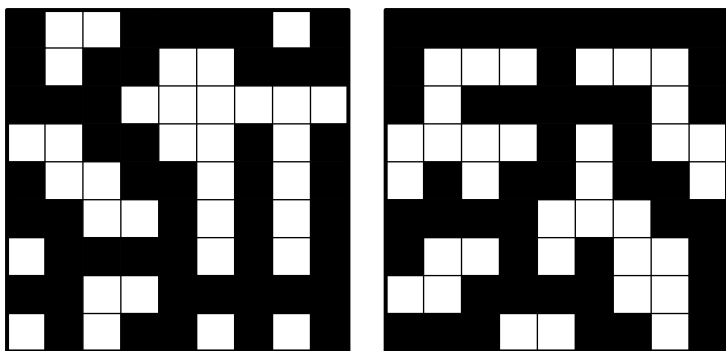
## 1. Battleships



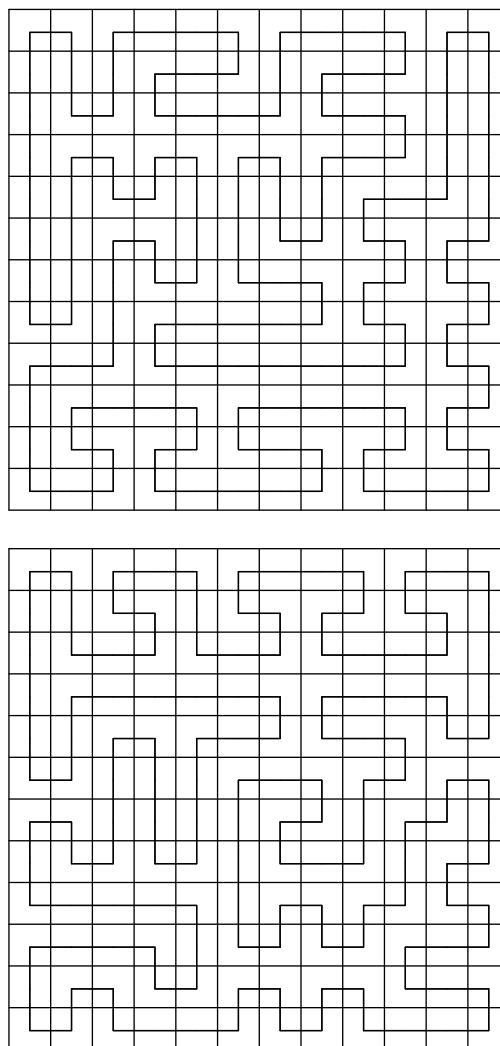
## 4. Parthenon



## 2. Coral finder



## 5. Loopfinder



## 3. Crack it on

L	E	V	I	N
	X		N	
A		O	R	T
S		L	I	
S	C			R
O	T	R	A	

M	O	C	A	S
	V	R		T
I	C			R
X	O	L	A	N
O		E	D	
R		O	T	O



### 10. Arrows

	↓	↘	↘	↖	↓	
↘	2	1	2	2	2	↖
↘	4	3	2	2	5	←
→	6	4	1	2	4	↘
→	5	5	4	2	6	←
↗	3	3	3	4	3	←
	↑	↑	↗	↖	↑	

	↓	↓	↖	↓	↖	↓	↓	
→	3	3	1	3	2	4	4	↖
↘	3	1	1	1	2	2	3	↗
→	5	4	2	4	3	5	5	←
→	5	4	3	3	4	5	4	←
→	5	4	3	4	4	4	4	←
↘	5	3	2	4	2	3	3	←
↗	4	4	3	2	3	3	3	←
	↑	↗	↖	↖	↑	↑	↑	

### 11. Kropki

4	6	1	7	2	3	5					
•				○							
2	•	1	6	4	○	3	5	7			
5	○	4	•	2	•	1	7	○	6	•	3
1		○		•		○					•
6	2	5	3	1	7	4					
•											
3	7	4	○	5	○	6	2	•	1		
7	5	3	•	6	4	1	•	2			

8	2	○	1	5	○	4	○	3	7	○	6
•											
1	4	•	2	7	○	6	8	3	5		
•											
2	6	○	7	4	•	8	1	5	3		
5	8	6	•	3	7	2	•	1	4		
3	7	4	•	2	○	1	5	○	6	8	
•											
6	1	3	8	5	7	4	•	2			
○											
7	5	8	6	•	3	○	4	•	2	•	1
4	○	3	5	1	•	2	6	8	○	7	

### 12. Japanese sums

9		1	4	8		6		3
5		7		9	4	3		2
7	8	5		2	1	9	6	4
		4	7		6		9	
2	9	8	5		7			
3	1		6	4	5	8	7	9
6		3	8			7	2	
1	2		9	7	3	5		8
4	5		2		8	1	3	7

**Puzzle authors:** Aline Koch (puzzles #4, 9, 10a, 11), Denis Auroux (puzzles #1, 3, 7, 8, 10b), stock (puzzles #2, 5, 6, 12)