

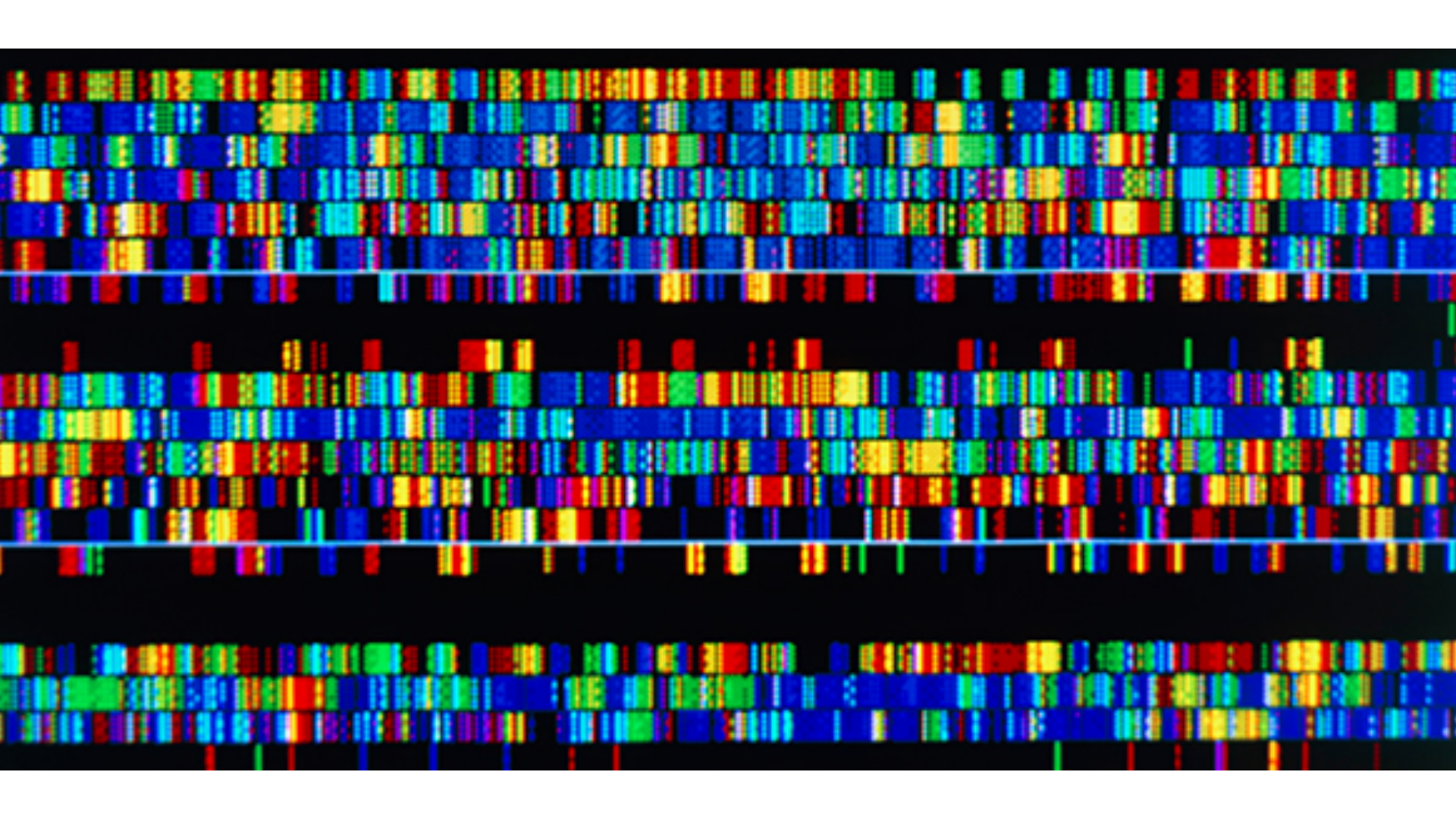
SMART Genomics API

Yishen Chen

Mentor - Dr. Gil Alterovitz

PRIMES Conference

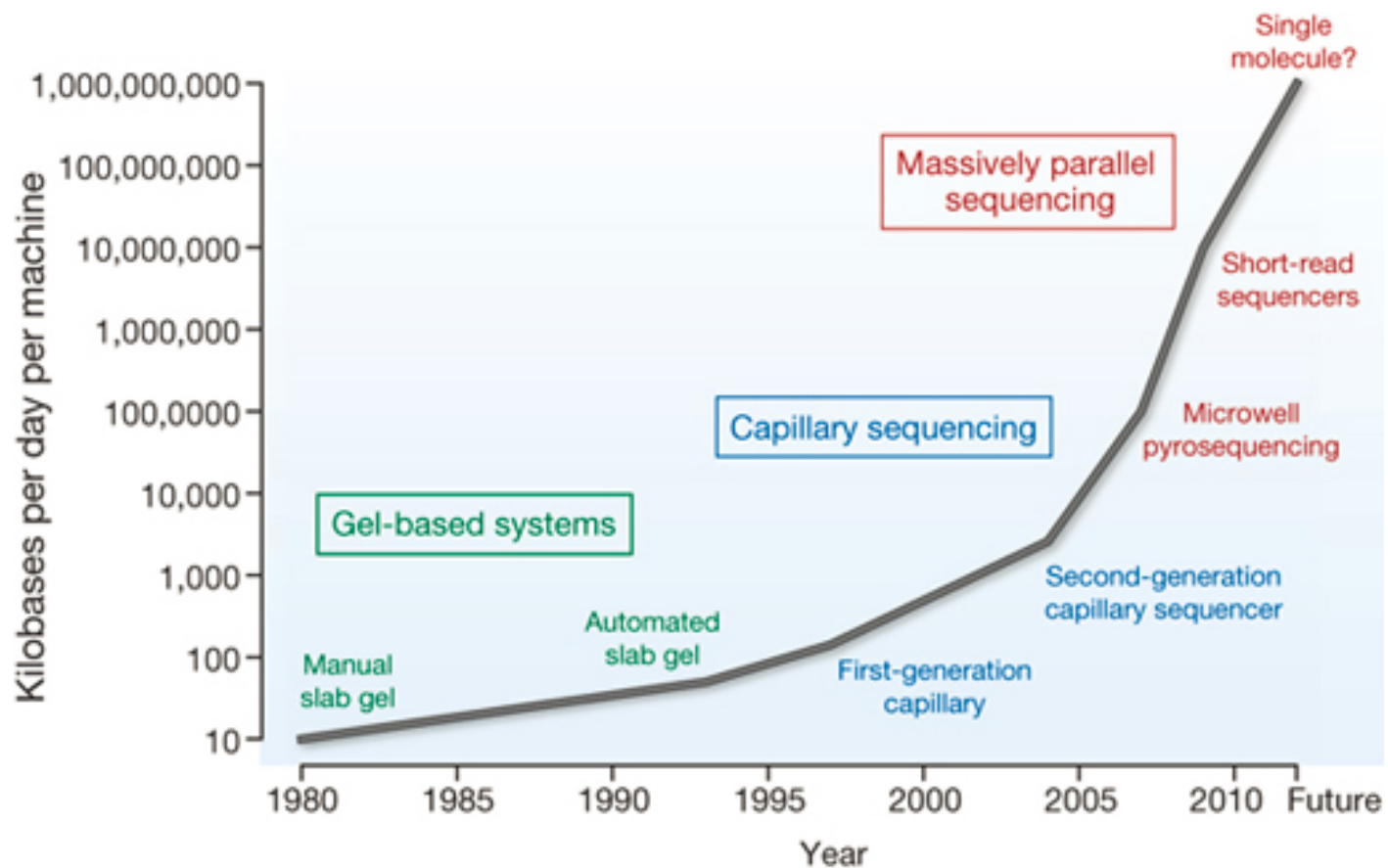
May 18, 2014



Status of Genomics

Status of Genomics

- Influx of data



Status of Genomics

- Influx of data

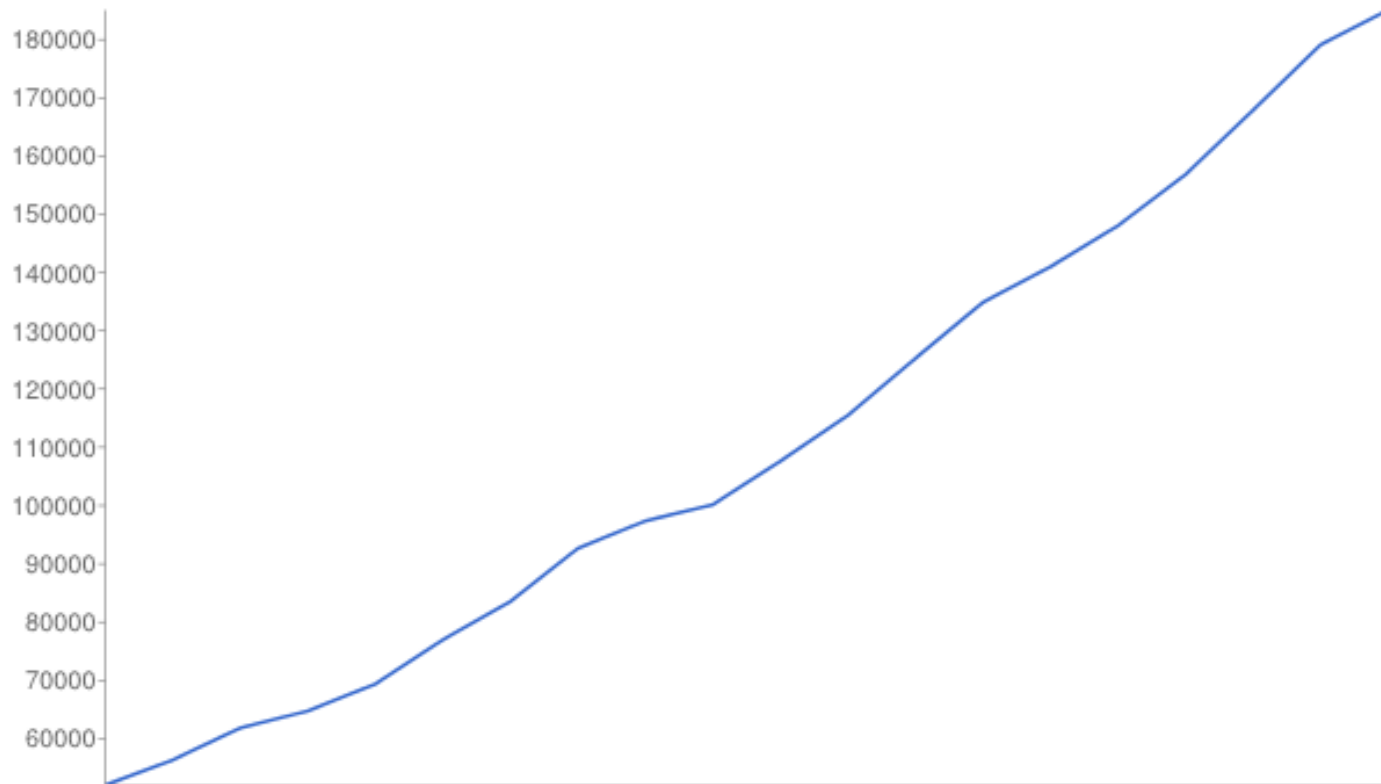
Status of Genomics

- Influx of data
- A lot of research

Status of Genomics

- Influx of data
- A lot of research (?)

Papers Published Every Year On Genetics (since 1993)



Status of Genomics

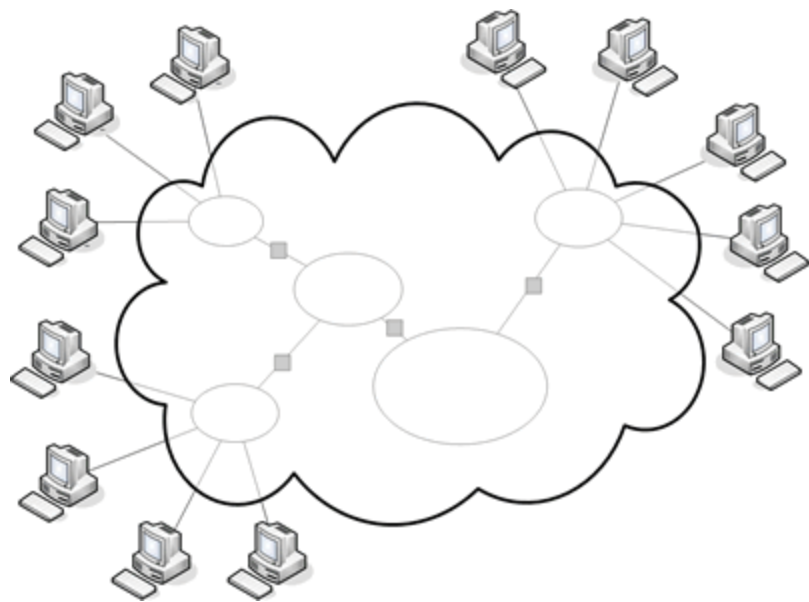
- Influx of data
- A lot of research!

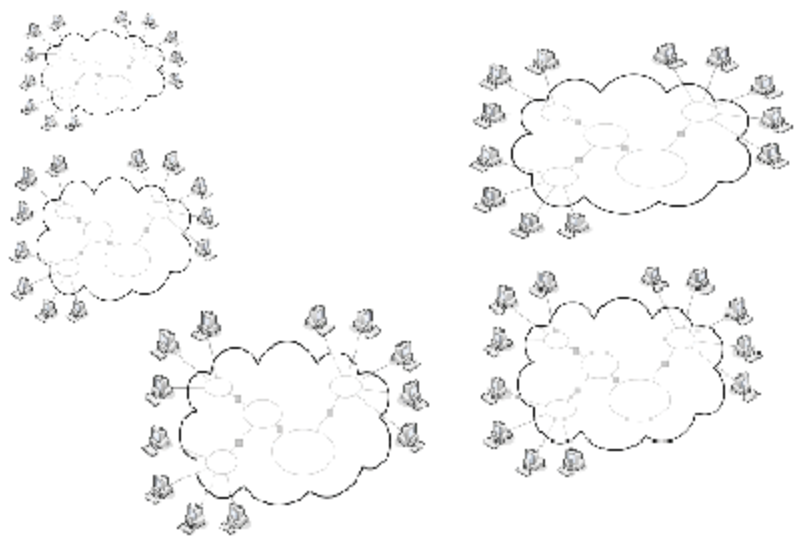
Status of Genomics

- Influx of data
- A lot of research!
- Insufficient integration with clinics

Status of Genomics

- Influx of data
- A lot of research!
- Insufficient integration with clinics
- Insufficient collaboration/application





Solution?



A (NEMA 1-15 USA 2 pin)



B (NEMA 5-15 USA 3 pin)



C (CEE 7/16)



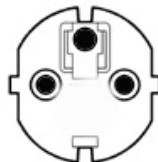
D (BS546 5 A version of Type M)



E (French)



F (CEE 7/4 "Schuko")



G (BS1363 Fused 13 A,
5 A and 3A also in common use)



H (SI 32 Israel)



I (AS-3112 Argentina /
Australia / New Zealand)



J (SEV-1011 Switzerland)



K (SRAF 1962/DB Denmark)



L (CEI 23-16 Chile / Italy)



M (15 A version of Type D BS546)



N Italy



O Denmark



P Israel



The ideal plug that makes everyone happy

SMART Project

- **S**ubstitutability **M**edical **A**pplication **R**eusable **T**echnology
- Funded by ONC
- Started as a Clinical project



SMART Genomics

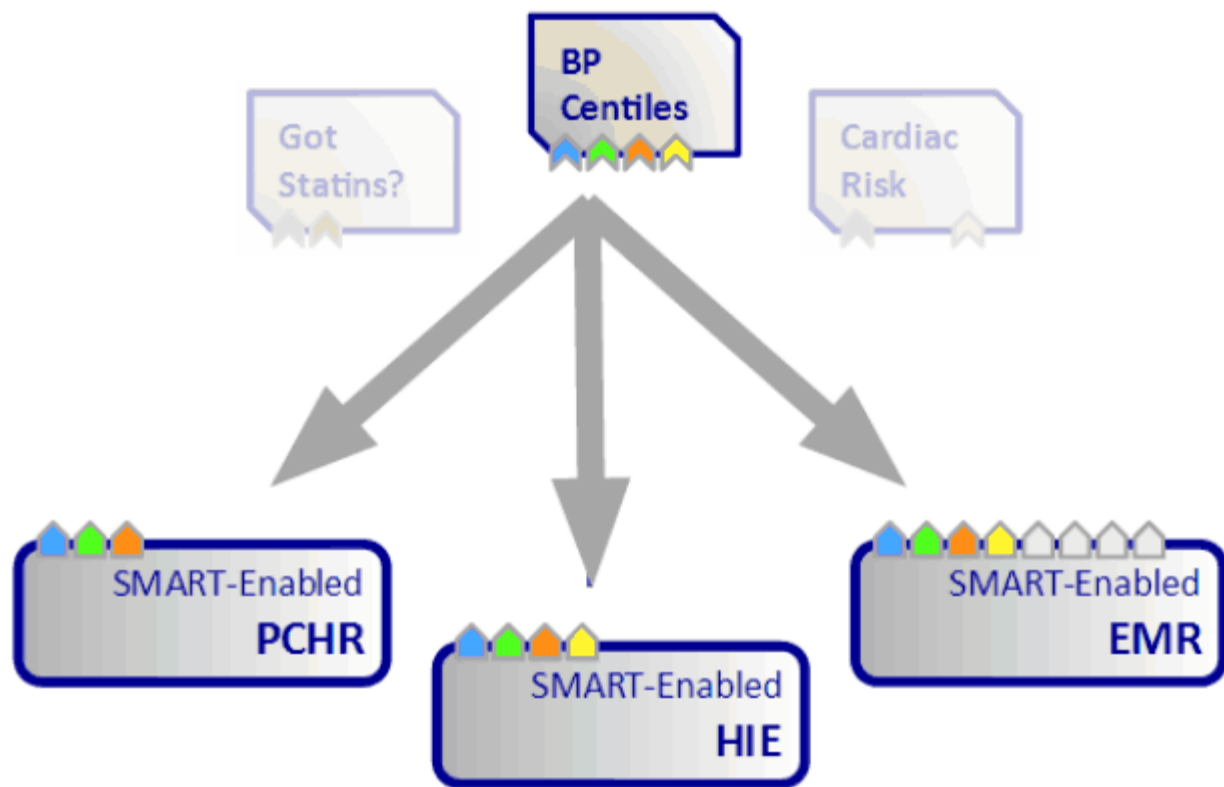
SMART Genomics

The object is simple.

SMART Genomics

The object is simple.

- Common API (**A**pplication **P**rogramming Interface)



SMART Genomics

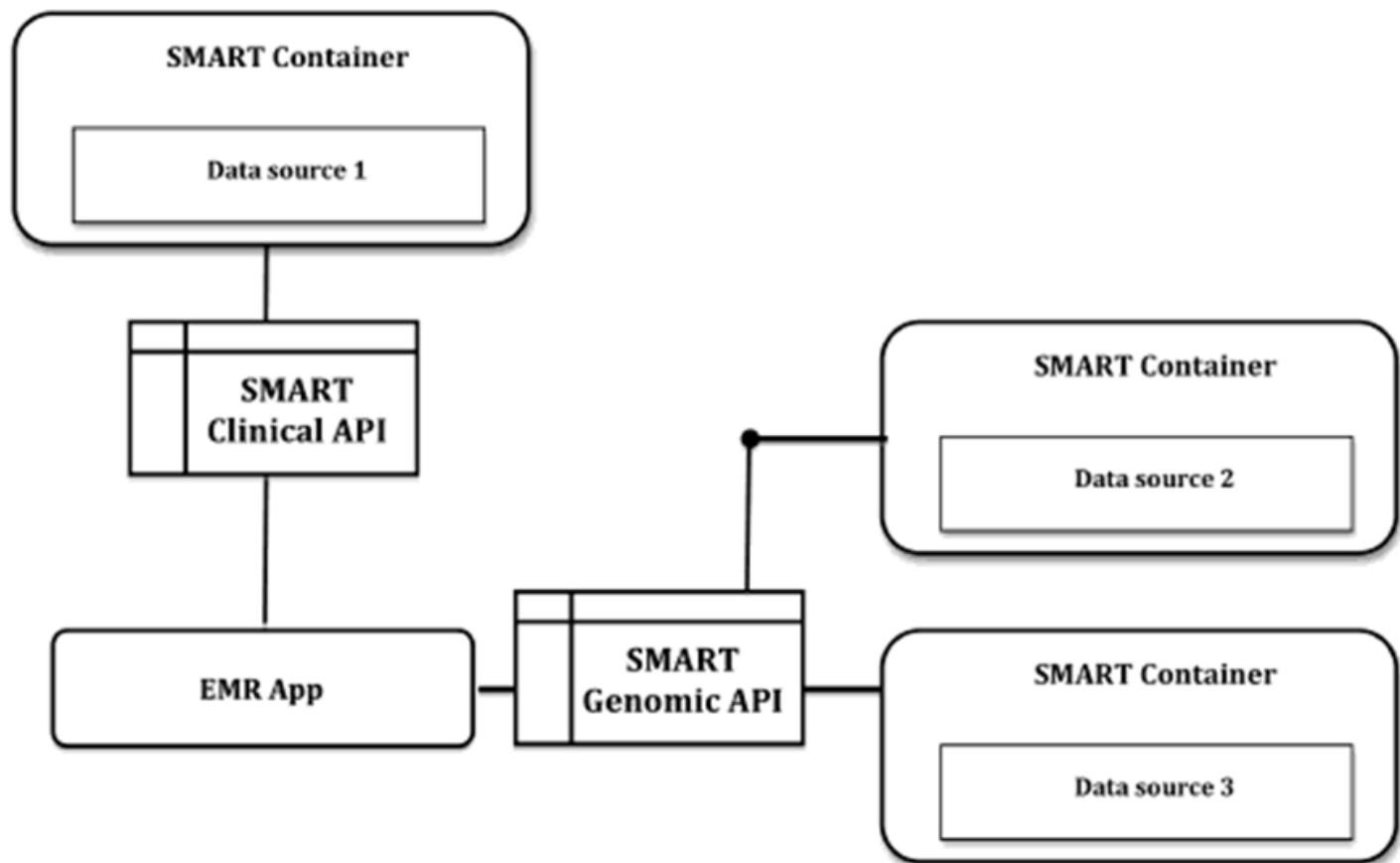
The object is simple.

- Common API (**A**pplication **P**rogramming Interface)

SMART Genomics

The object is simple.

- Common API (**A**pplication **P**rogramming Interface)
- Bridges labs and clinics



Collaboration with the Industry

Collaboration with the Industry

- Clinic side - **FHIR** (Fast Health Interoperability Resource)



Collaboration with the Industry

- Clinic side - **FHIR** (Fast Health Interoperability Resource)
- Research side - **GA4GH** (Global Alliance for Genomics and Health)



Global Alliance
for Genomics & Health

Project Status

- Specification

Project Status

- Specification
- Reference server

Project Status

- Specification
- Reference server
- Demo applications

Project Status

- Specification
- Reference server
- Demo applications
 - Genomics Advisor (Web app and iOS app)
 - Variant Mapper



SMART



Patient List



Alerts



Diabetes Monograph



Genomics Advisor

Vitalis, Al

DOB 2005-08-

SMART Diabetes Monograph Genomics Advisor

[Close]

BP goal < 130/80



Genomics Ad

Patient ID:

Data format:

Last Known v

Ur tp

0-135

µalb/cre

< 30.0

SGOT

10-40

Chol

< 200

Tri

< 150

HDL

> 40

LDL

< 100

BUN

8%-25%

Cre

0.6-1.5

Glu

70-110

A1C

< 7%

SNP	Locus	CHRM	Code	Risk	Frequency
Type 1 Diabetes					
rs7202877	16Q23	16	TT	0.95	81.0%
rs5753037	22Q12	22	CC	0.93	37.2%
rs3087243	CTLA4	2	AG	0.98	49.4%
rs3825932	CTSH	15	CT	0.94	43.4%
rs1990760	IFIH1	2	TT	1.16	36.2%
rs6822844	IL2	4	GT	0.73	30.2%
rs3184504	SH2B3	12	CC	0.74	26.0%

Total Relative Risk: 0.51

SNP	Locus	CHRM	Code	Risk	Frequency
Type 2 Diabetes					
rs2877716	ADCY5	3	CC	1.05	59.3%
rs2383208	CDKN2A	9	AG	0.88	28.2%
rs4402960	IGF2BP2	3	GG	0.92	46.2%
rs2237892	KCNQ1	11	CC	1.03	86.5%
rs2793831	NOTCH2	1	TT	0.97	79.9%
rs7578597	THADA	2	TT	1.03	81.4%
rs7961581	TSPAN8	12	TT	0.95	53.4%

Total Relative Risk: 0.83

SNP	Locus	CHRM	Code	Risk	Frequency
Hypertension					
rs12413409	CYP17A1	10	GG	1.03	82.8%
rs17367504	MTHFR	1	AA	1.03	74.0%
rs3184504	SH2B3	12	CC	0.93	28.1%

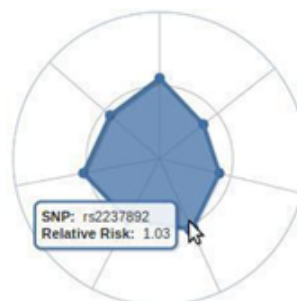
Total Relative Risk: 0.99

SNP	Locus	CHRM	Code	Risk	Frequency
Coronary Heart Disease					
rs1746048	CXCL12	10	CC	1.05	70.6%
rs3184504	SH2B3	12	CC	0.89	30.2%
rs6725887	WDR12	2	TT	0.95	74.0%

Total Relative Risk: 0.89

Radar Graphs

Diabetes Mellitus Type 2

Type 1 Diabetes
SNP: rs1990760
Relative Risk: 1.16SNP: rs2237892
Relative Risk: 1.03

Genomics Advice

Disease Info

Patient is not at increased genomic risk for any Diabetes related comorbidities

Drug Advice

SNP Genotype Advice

No Information Available

Genomics Advisor

CHD

Menu

Disconnect

search for trait

Search

Lilly Demo ▾

Trait/Phenotype

Familial Mediterranean Fever

Zellweger Syndrome Spectrum

Phenylketonuria

Crohn's Disease

Bipolar Disorder

Ulcerative Colitis

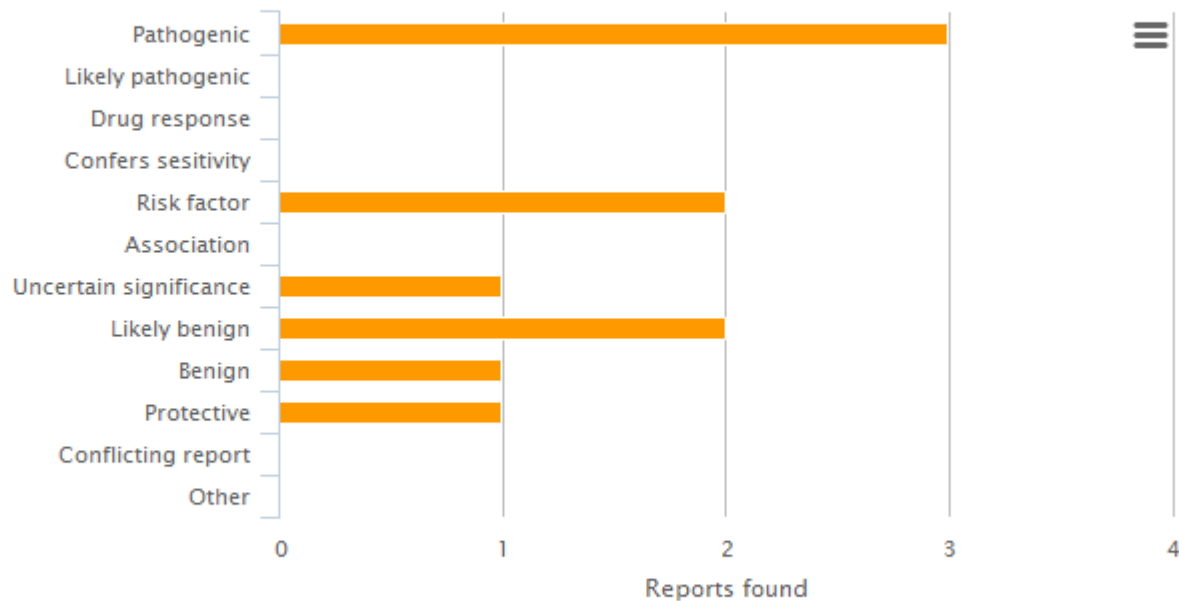
Celiac Disease

Hereditary Fructose Intolerance

Familial Hyperinsulinism

Age-related Macular Degenerati

Breast Cancer



- Reviewed by professional society
- Reviewed by expert panel
- Classified by multiple submitters
- Classified by single submitter
- Not classified by submitter
- Conflict identified

Project Status

- Specification
- Reference server
- Demo applications
- Usecase

Project Status

- Specification
- Reference server
- Demo applications
- Usecase
 - Partners Healthcare



Acknowledgements

- John Zhang
- Dr. Gil Alterovitz
- Community
- PRIMES